



**Oulton**  
COLLEGE • COLLÈGE

**CONNECTING** STUDENTS  
TO EMPLOYERS

# MONCTON

**26**  
*Tim Hortons.*

**40 Pizza  
Places!!**



## CANADA'S BEST PLACES TO LIVE

SOURCE: MONEY SENSE

**49. Moncton**

74. Halifax  
99. Charlottetown  
109. Fredericton  
191. Saint John



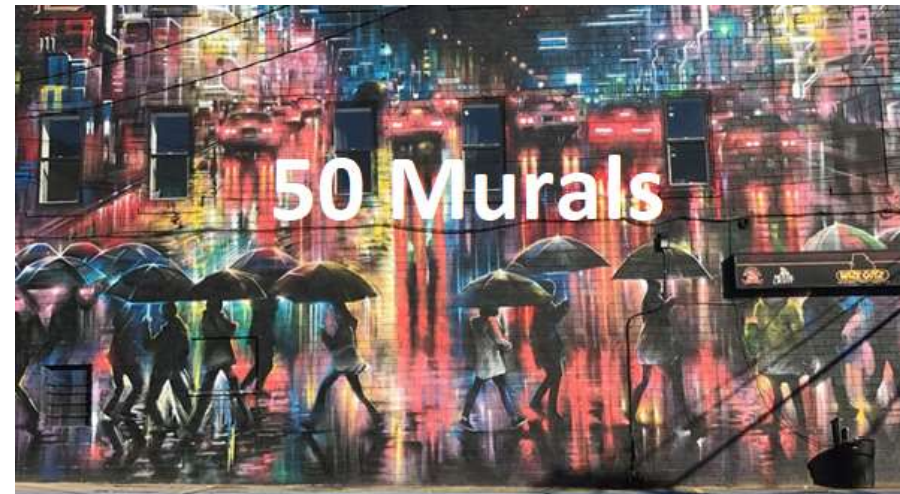
## MAINSTREET RESEARCH

[Services](#) [Polls](#) [Insights](#) [Media](#) [Who We Are](#) [Contact](#)

were asked about."

"Charlottetown, Moncton, St John's and Quebec City rounded out the top five among the "safest" with Toronto, Montreal, Saskatoon and Edmonton rounding out the bottom 5 of those considered unsafest. Only Toronto joined Winnipeg with a negative score with 46% saying it was safe, compared to 47% saying it was unsafe. All other cities had at least a plurality of Canadians considering them safe cities, including a majority in 11 of 15 cities."

**50 Murals**





# WHO IS OULTON COLLEGE?

- In business for over 60 years.
- Leader in Career training.
- Leader in employment rates.
- Over 800 students.
- 19 programs in 4 faculties.
- Multicultural, safe and inclusive environment.
- Learning accommodations and mental health support are available for all students.



# WHY GO TO OULTON?

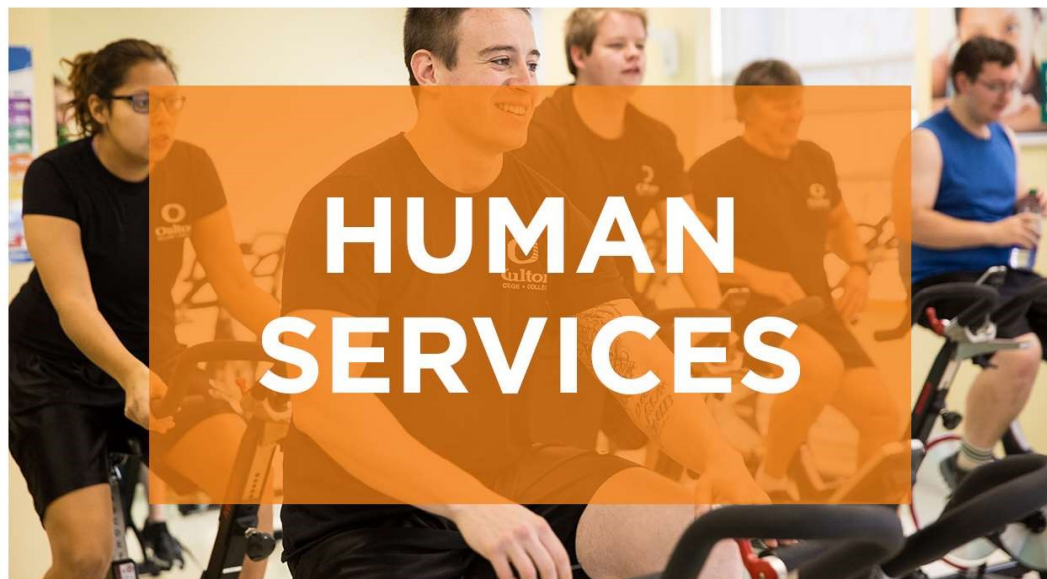
- We provide every student with a Student Service Advisor and a Career Service Advisor.
- Connected to over 1000 employers in Atlantic Canada.
- Class time is made up of 60% hands on activities and 40% theory.
- Help our students create a strong cover letter and resume, Portfolio and prepare for the interview process.
- Oulton College has an overall 94% employment rate.



# OUR THREE CAMPUSES







# BUSINESS

- BUSINESS MANAGEMENT & ENTREPRENEURSHIP
- MEDICAL OFFICE ADMINISTRATION
- PARALEGAL/LEGAL ASSISTANT
- SALES, MARKETING & BUSINESS DEVELOPMENT
- TRAVEL & HOSPITALITY

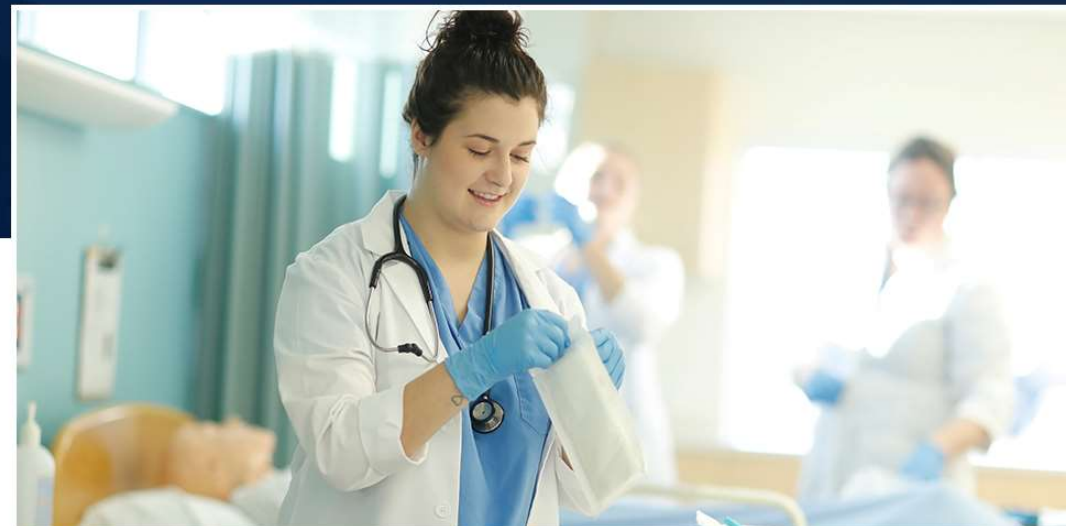






# HEALTH SCIENCES

- DENTAL ASSISTANT
- DENTAL HYGIENE
- MEDICAL LABORATORY ASSISTANT
- MEDICAL LABORATORY TECHNOLOGY
- OPTICIAN\*
- PRACTICAL NURSE
- PRIMARY CARE PARAMEDIC
- VETERINARY ASSISTANT
- VETERINARY TECHNICIAN



\*PROGRAM UNDER REVIEW



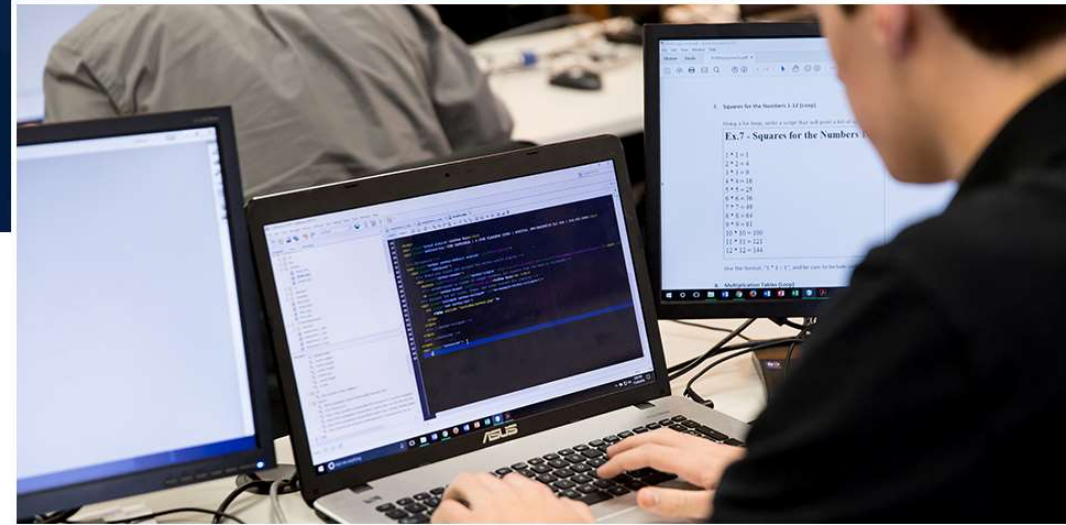
# HUMAN SERVICES

- CHILD & YOUTH CARE
- EARLY CHILDHOOD EDUCATION/  
EDUCATIONAL ASSISTANT
- HUMAN SERVICES COUNSELLOR
- POLICING & CORRECTIONS FOUNDATIONS



# INFORMATION TECHNOLOGY

- SYSTEMS MANAGEMENT & CYBERSERURITY





# ACADEMIC UPGRADING

Missing academic requirements?

You only need your grade 12 diploma or GED and you're eligible for Academic Upgrading in the following classes:

- Math Foundation 110
- Biology 112
- English 122
- Chemistry 112



# CO-OP PLACEMENT OPPORTUNITY



**IF YOU ARE INTERESTED IN THE  
CO-OP PROGRAM AND WOULD  
LIKE TO BE PLACED WITH ONE OF  
OUR PROGRAMS.**

**WE CAN HELP.**





# REQUIREMENTS

PROGRAM	ADMISSION REQUIREMENTS	DURATION
<b>Business Management &amp; Entrepreneurship</b>	<ul style="list-style-type: none"><li>• Grade 12 Diploma, Adult Diploma or GED</li><li>• Meeting with an Admissions Advisor</li></ul>	10 Months
<b>Medical Office Administration</b>	<ul style="list-style-type: none"><li>• Grade 12 Diploma, Adult Diploma or GED</li><li>• Meeting with an Admissions Advisor</li></ul>	10 Months
<b>Paralegal/Legal Assistant</b>	<ul style="list-style-type: none"><li>• Grade 12 Diploma, Adult Diploma or GED</li><li>• Meeting with an Admissions Advisor</li></ul>	10 Months
<b>Sales, Marketing &amp; Business Development</b>	<ul style="list-style-type: none"><li>• Grade 12 Diploma, Adult Diploma or GED</li><li>• Meeting with an Admissions Advisor</li></ul>	10 Months
<b>Travel &amp; Hospitality</b>	<ul style="list-style-type: none"><li>• Grade 12 Diploma, Adult Diploma or GED</li><li>• Meeting with an Admissions Advisor</li><li>• Valid passport</li></ul>	10 Months

# REQUIREMENTS

PROGRAM	ADMISSION REQUIREMENTS	DURATION
Child & Youth Care	<ul style="list-style-type: none"> <li>• Grade 12 Diploma, Adult Diploma or GED</li> <li>• Meeting with an Admissions Advisor</li> </ul>	15 Months
Early Childhood Education/ Educational Assistant	<ul style="list-style-type: none"> <li>• Grade 12 Diploma, Adult Diploma or GED</li> <li>• Meeting with an Admissions Advisor</li> </ul>	10 Months
Human Services Counsellor	<ul style="list-style-type: none"> <li>• Grade 12 Diploma, Adult Diploma or GED</li> <li>• Meeting with an Admissions Advisor</li> </ul>	15 Months
Policing & Corrections Foundations	<ul style="list-style-type: none"> <li>• Grade 12 Diploma, Adult Diploma or GED</li> <li>• Meeting with an Admissions Advisor</li> <li>• Copy of birth certificate or proof of Canadian citizenship</li> </ul>	1 Year
PROGRAM	ADMISSION REQUIREMENTS	DURATION
Systems Management & Cybersecurity	<ul style="list-style-type: none"> <li>• Grade 12 Diploma, Adult Diploma or GED</li> <li>• Meeting with an Admissions Advisor</li> </ul>	10 Months



# REQUIREMENTS

PROGRAM	ADMISSION REQUIREMENTS	DURATION
<b>Dental Assistant (Level II)</b>	<ul style="list-style-type: none"> <li>• Grade 12 Diploma, Adult Diploma or GED</li> <li>• Meeting with an Admissions Advisor</li> <li>• Grade 11 or 12 Biology* with a minimum average of 65%</li> <li>• Grade 11 or 12 English*</li> <li>• Geographical quotas may be considered</li> </ul>	10 Months
<b>Dental Hygiene</b>	<ul style="list-style-type: none"> <li>• Grade 12 Diploma, Adult Diploma or GED</li> <li>• Meeting with an Admissions Advisor</li> <li>• 9 university level credits: 3-credit Biology, 3-credit English or approved writing course, 3-credit in any other university level course, all three with a minimum "C" grade, or equivalent with a minimum average of 65%</li> <li>• Pre-Admissions entrance test</li> <li>• Faculty interview</li> <li>• Geographical quotas may be considered</li> </ul>	2 Years

<b>Medical Laboratory Assistant</b>	<ul style="list-style-type: none"> <li>• Grade 12 Diploma, Adult Diploma or GED</li> <li>• Meeting with an Admissions Advisor</li> <li>• Grade 11 or 12 Biology* or Chemistry* with a minimum average of 60%</li> <li>• Grade 11 or 12 Academic Math* considered an asset</li> <li>• Geographical quotas may be considered</li> </ul>	10 Months
PROGRAM	ADMISSION REQUIREMENTS	DURATION
<b>Medical Laboratory Technology</b>	<ul style="list-style-type: none"> <li>• Grade 12 Diploma, Adult Diploma or GED</li> <li>• Meeting with an Admissions Advisor</li> <li>• Grade 11 or 12 English* with minimum 65%</li> <li>• Grade 11 or 12 Sciences* (2) with a minimum 65%: Biology* Chemistry* Physics*</li> <li>• Grade 11 or 12 Academic Math* with a minimum 65%</li> <li>• Pre-Admissions entrance test</li> <li>• Faculty interview</li> <li>• Other credits from university considered assets</li> <li>• Geographical quotas may be considered</li> </ul>	2 Years

# REQUIREMENTS

<b>Optician</b>	<ul style="list-style-type: none"> <li>• Grade 12 Diploma, Adult Diploma or GED</li> <li>• Meeting with an Admissions Advisor</li> <li>• Grade 11 or 12 Biology* with a minimum average of 65%</li> <li>• Grade 11 or 12 English* with a minimum average of 65%</li> <li>• Grade 11 or 12 Academic Math* with a minimum average of 65%</li> <li>• Grade 11 or 12 Physics* considered an asset</li> <li>• Geographical quotas may be considered</li> </ul>	2 Years
<b>Practical Nurse</b>	<ul style="list-style-type: none"> <li>• Grade 12 Diploma, Adult Diploma or GED</li> <li>• Meeting with an Admissions Advisor</li> <li>• Grade 11 or 12 Biology* with a minimum average of 65%</li> <li>• Grade 11 or 12 English* with a minimum average of 65%</li> <li>• Grade 11 or 12 Academic Math* with a minimum average of 65%</li> <li>• Pre-Admissions entrance test</li> <li>• Faculty interview</li> <li>• Geographical quotas may be considered</li> </ul>	2 Years

## **Primary Care Paramedic**

Now being offered with Integrated French Language Training (IFLT)

- Grade 12 Diploma, Adult Diploma, or GED
- Meeting with an Admissions Advisor
- Grade 11 or 12 Biology\* with a minimum average of 65%
- Grade 11 or 12 Academic Math\* with a minimum average of 65%
- Grade 11 or 12 English\* with a minimum average of 65%
- 19 years of age prior to commencement of Practicum
- Credits from university are considered assets
- Pre-Admissions entrance test
- Faculty interview
- Geographical quotas may be considered
- Bilingualism is an asset
- Class 5 driver's licence no later than 30 days after program start date

15  
Months

## **Veterinary Assistant**

- Grade 12 Diploma, Adult Diploma or GED
- Meeting with an Admissions Advisor

10  
Months

## **Veterinary Technician**

- Grade 12 Diploma, Adult Diploma or GED
- Meeting with an Admissions Advisor
- Grade 11 or 12 Biology\* with a minimum average of 65%
- Grade 11 or 12 English with a minimum average of 65%
- Grade 11 or 12 Academic Math\* with a minimum average of 65%
- Grade 11 or 12 Chemistry\* and/or Physics\* considered an asset
- Geographical quotas may be considered
- Pre-Admissions entrance test may be used

2 Years



# CRANDALL AGREEMENT



**Crandall**  
University



Diploma + Bachelors Degree = 3 years

# CAREER SERVICES

**SUPPORTING YOU FROM THE MINUTE YOU WALK IN**

**PLACEMENTS & JOB OPPORTUNITIES**

**ASSISTING YOU ON BECOMING JOB-READY**

COVER LETTERS & RESUMES

JOB SEARCHING & APPLICATIONS

INTERVIEW PREPARATION

ON-THE-JOB TRAINING

NETWORKING

CAREER COACHING

PROFESSIONALISM





# STUDENT SERVICES

**SUCCESS LOOKS DIFFERENT FOR EVERYONE**

**HERE TO HELP YOU ACHIEVE YOUR GOALS**

**WE OFFER PROGRAMS & ASSISTANCE THAT RESPOND  
TO A RANGE OF PERSONAL & ACADEMIC NEEDS**

ONE-ON-ONE CONSULTATIONS

ACADEMIC SUPPORT

ACADEMIC ACCOMMODATIONS FOR STUDENTS WITH LEARNING DISABILITIES

RESOURCES

ON-SITE PEER TUTORING

**WE HAVE PARTNERED WITH EMPATHIC LIFE SOLUTIONS TO OFFER  
FREE COUNSELLING SERVICES TO STUDENTS WHEN NEEDED**



# FINANCING YOUR EDUCATION

## PRIVATE PAY

STUDENT LINE OF CREDIT

CHEQUE

## STUDENT LOANS

APPLY IN PROVINCE OF RESIDENCY

NSLSC (NATIONAL STUDENT LOAN SERVICE CENTER)

## TRAINING, SKILLS & DEVELOPMENT

EI FUNDING

## SCHOLARSHIPS, GRANTS & BUSARIES





# OTHER GOOD STUFF

- Great food in Special Ts cafeteria!
- Lots of parking
- Student Council / Facebook groups
- School wide events
- Competitions & prizes
- Swag Shop



# Questions?

**WIN A \$1000 BUSARY**

IF YOU PAY YOUR PROGRAM DEPOSIT  
BEFORE DECEMBER 15<sup>TH</sup>

\*UP TO 3 BUSARIES BEING DRAWN  
\*MUST BE ABLE TO ATTEND IN SEPTEMBER 2021

**WIN A MACBOOK**

IF YOU REQUEST INFORMATION ABOUT A PROGRAM BEFORE  
DECEMBER 15<sup>TH</sup> & GET YOUR NAME ENTERED IN THE DRAW

\*EXTRA BALLOTS FOR:  
COMING IN FOR A MEETING (1) AND/OR REGISTER FOR A PROGRAM (1)  
\*MUST BE ABLE TO ATTEND IN SEPTEMBER 2021



**LEARN MORE**



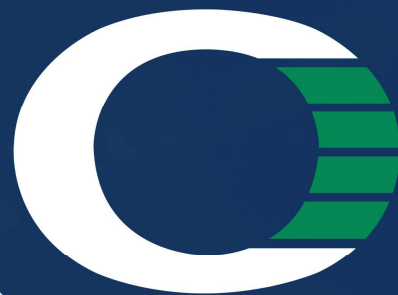


**Text or Call:**  
**Carol: 506-875-1607**  
**Seb: 506-875-9185**

**Email:**  
**[cbrownpenny@oulttoncollege.com](mailto:cbrownpenny@oulttoncollege.com)**  
**[ssoucy@oulttoncollege.com](mailto:ssoucy@oulttoncollege.com)**



Thank you!



**Oulton**  
COLLEGE • COLLÈGE

CONNECTING STUDENTS  
TO EMPLOYERS

